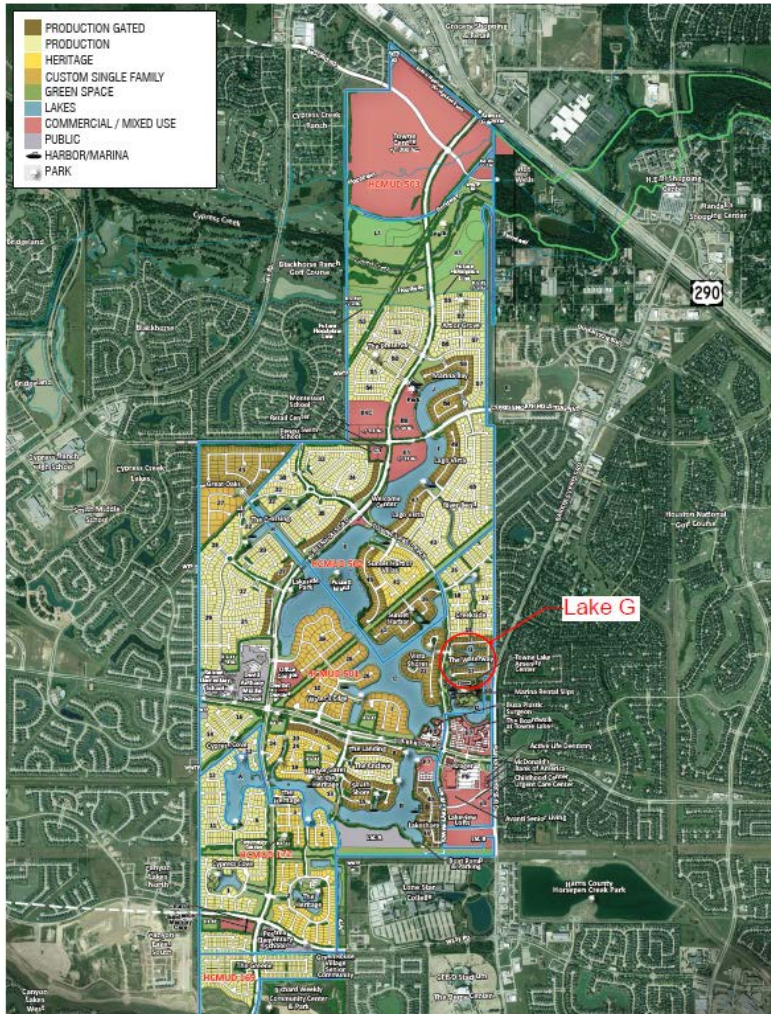


HARRIS COUNTY MUNICIPAL UTILITY DISTRICT NO. 500

Lake G Dredging Update - 2/4/2019



Dredging is scheduled to start 2/4/19. It will start in the northeast corner of the lake and work towards the middle. From there they will work towards the northwest corner. Working hours are Monday - Friday 7a.m. - 7 p.m.. For questions about the project please contact Amy Downhour or Kara Morrison, with EHRA Engineering, at 713-784-4500.

Towne Lake **TOWNE LAKE**
Development Master Plan /MUD Lake Map
A Master Planned Community located in Northwest Harris County, Texas

December 6 2018
10 100 100 100 100
100 100 100 100

EHRA
10555 Westliffa Drive
Houston, Texas 77042
713.784.4500
EHRAinc.com